

# **HARGROVE GAS LOGS CONCENTRIC LATCH TAP VALVE (CLE-PO-RC) PILOT CONTROL SYSTEM INSTALLATION INSTRUCTIONS**

## **FOR YOUR SAFETY**

**DO NOT STORE OR USE GASOLINE OR OTHER FLAMMABLE LIQUIDS OR FLAMMABLE VAPORS IN THE VICINITY OF THIS OR ANY OTHER APPLIANCE.**

**AIR CURRENTS MAY DRAW FLAMMABLE VAPORS FROM OTHER AREAS OF YOUR HOUSE TO THIS APPLIANCE.**

## **CAUTIONS**

1. This valve should be installed only by a qualified service technician trained in gas safety equipment.
2. Turn off the gas supply before installing the valve.
3. All piping must meet applicable local codes and ordinances and the National Fuel Gas Code (**ANS Z223.1/NFPA NO.54**)
4. All wiring must meet the applicable electrical codes and ordinances.
5. Assure that the complete system is operating according to the manufacturer's instructions after installing the Parts Only Kit.
6. Prior to installation, verify conformance with the log unit's installation instructions.
7. Assure that all the piping is free of any foreign matter.

This gas pilot safety valve provides 100% shut-off of both the pilot and main burner gas supplies in the event of a pilot flame failure. This valve is equipped with a gas control knob for lighting the pilot and manual adjustment of the flame height as well as a remote on/off system.

If the pilot flame goes out during normal operation, or if the gas flow to the pilot flame is insufficient and will not provide enough heat to the thermocouple output, the safety valve will close, stopping the flow of gas to the pilot and burner. This valve is designed for Natural or Propane gas with a maximum pressure of 1/2" PSI.

## **FOR YOUR SAFETY WHAT TO DO IF YOU SMELL GAS**

1. **Open windows.**
2. **Extinguish all open flames.**
3. **Do not try to light any appliance.**
4. **Do not touch any electrical switch; do not use the phone in your building.**
5. **Immediately call your gas supplier from a neighbor's phone. Follow the gas supplier's instructions.**
6. **If you cannot reach your gas supplier, call the fire department.**

# INSTALLATION INSTRUCTIONS

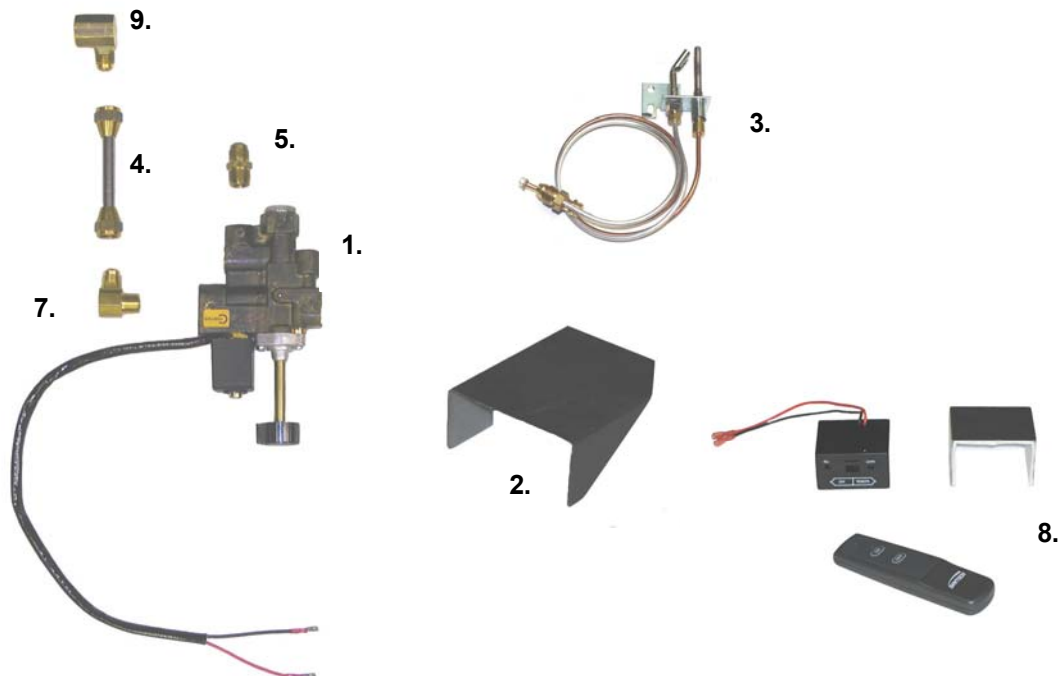
## **WARNING**

To avoid a potential fire hazard, do not disassemble or attempt to repair the safety gas valve. Disassembly, reassembly or internal adjustment could cause the valve to malfunction, resulting in property damage, personal injury, or death. If the control valve does not operate properly following the installation or service, replace the unit.

**INSTALLING A HARGROVE SAFETY GAS VALVE IN A LOCATION OTHER THAN SPECIFIED IN THIS MANUAL (SEE FIGURE 1) WILL VOID THE WARRANTY, EXCEPT WHEN THE SAFETY GAS VALVE IS INSTALLED OUTSIDE THE FIREBOX IN A SAFE AND PROPER INSTALLATION AND ACCESS IS PROVIDED FOR MAINTENANCE AND REPAIR OF THE SYSTEM. A QUALIFIED INSTALLER MUST MAKE INSTALLATION AND ADJUSTMENTS.**

## **PARTS LIST**

<u>PART NUMBER</u>	<u>PART DESCRIPTION</u>
1. CLC-C	1. CONCENTRIC LATCH TAP VALVE
2. HS-CLC-450	2. GAS VALVE HEAT SHIELD
3. RSTPB-18	3. THERMOCOUPLE/PILOT ASSEMBLY
4. SC-3	4. STAINLESS CONNECTOR
5. 48-6	5. BRASS UNION 3/8" MIPx3/8"FL
6. SW-HSCLC-450(not pictured)	6. SUPERWOOL INSULATION/ CLC-HS
7. 49-6	7. BRASS 3/8" MIPx3/8"FL 90° Elbow
8. RC-S12V-CON	8. SKYTECH CONCENTRIC REMOTE
9. 50-6-8 (In Accessory Kit)	9. BRASS 1/2" FIP x 3/8"FL 90° Elbow



# INSTALLATION INSTRUCTIONS

This gas valve should be installed according to the following instructions. Check for leaks after completing the installation with a soapy water solution.

## INLET GAS SUPPLY CONNECTION

1. Be sure the main gas supply is shut off before starting the installation. The manual shut-off valve should be located such that it is easily accessible.
2. The direction of gas flow is indicated by the directional arrow on the inlet and outlet boss.
3. You should use new pipe. If you use old pipe, be sure it is clean and free of rust, scale, burrs, chips and old pipe joint compound.
4. Apply pipe joint compound, approved for all gases, to the male threads (and only the male threads) of the pipe joints. DO NOT apply compound to the first two threads. Do not thread pipe too far.

NOTE: Applying pipe joint compound to pipe threads will prevent chips from passing into the internal valve parts, since the pipe joint compound will connect and retain chips that are formed as the pipe is threaded into the body.

5. If a vise or open-ended wrench is used to hold the control while installing the pipe, do not tighten excessively, as this may damage the control.

## CLC-C INSTALLATION

1. Attach and tighten the brass 48-6 to the CLC-C inlet.
2. Attach and tighten the brass 49-6 to the outlet of the CLC-C and attach and tighten the SC-3 connector to the end of the 49-6.
3. Verify that a brass 50-6-8 is attached to the Ember Burner pan and the flare fitting is pointing forward. Attach and tighten the SC-3 to the 50-6-8.
4. Use the #8 screws (not illustrated) to attach the RSTPB-18 pilot assembly to the back side of the burner pan in the pre-drilled holes. Attach the pilot so that the pilot burner is above the back wall of the Ember Burner pan. **See Figure 1**

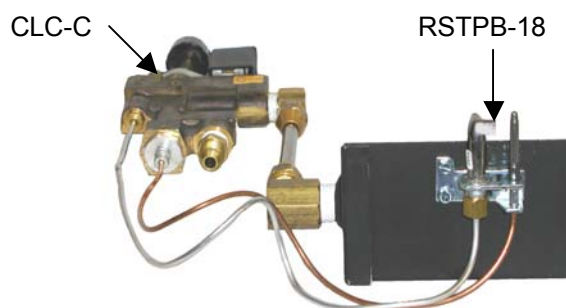
## PILOT GAS CONNECTION

Install the silver tubing from the RSTPB-18 into the pilot gas tap, turning until finger-tight. Tighten an additional 1 1/2 turns. **See Figure 1**

## THERMOCOUPLE CONNECTION

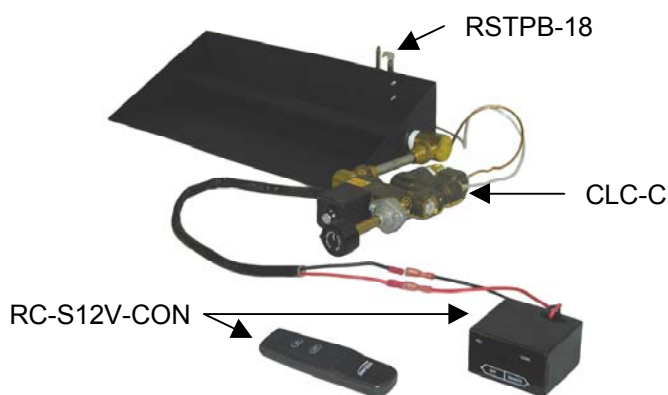
The thermocouple connector should be clean for good electrical contact. Run the thermocouple nut into the thermocouple connection as far as possible by hand. Turn the fitting an additional 1/4 turn. **See Figure 1**

**Back View of Valve Assembly**



**Figure 1**

**Side View of Valve and Remote Assembly**



# OPERATION INSTRUCTIONS

## FOR YOUR SAFETY

**WARNING:** If you do not follow these instructions exactly, a fire or explosion may occur resulting in property damage, personal injury, or loss of life.

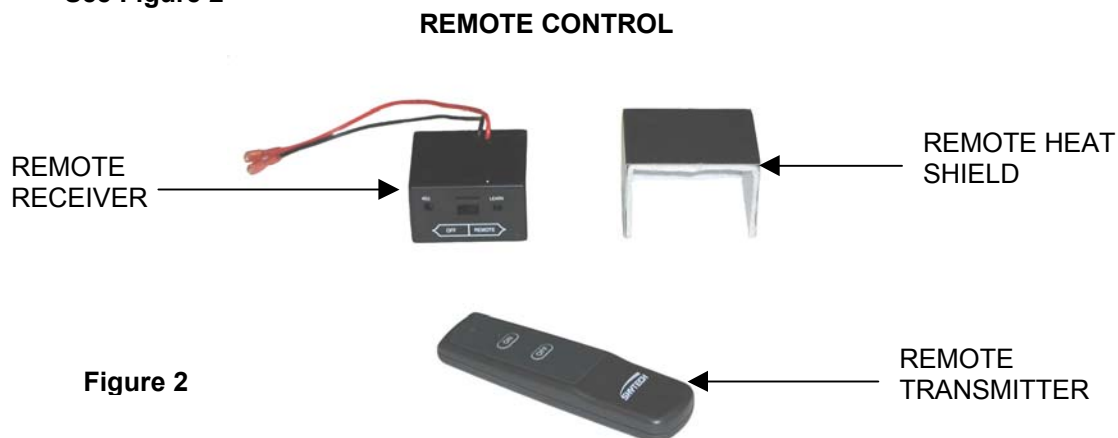
**THIS APPLIANCE HAS A PILOT, WHICH MUST BE LIT BY HAND. WHEN LIGHTING THE PILOT, FOLLOW THESE INSTRUCTIONS EXACTLY. BEFORE LIGHTING, SMELL ALL AROUND THE APPLIANCE AREA FOR GAS. BE SURE TO SMELL NEXT TO THE FLOOR BECAUSE SOME GASES ARE HEAVIER THAN AIR AND WILL SETTLE ON THE FLOOR.**

## BASIC OPERATION

1. Knob is for manual pilot, on-off function. Turn knob counterclockwise to the "PILOT" position and depress knob to allow flow of the pilot gas to the pilot burner. **See Figure 2**  
**\*USE ONLY YOUR HAND TO TURN OR PUSH IN KNOB!** Never use tools. If the knob will not push in or turn by hand, do not try to repair it. Call a qualified service technician. Forced or attempted repair may result in a fire or explosion.
2. Light the pilot and continue to depress the knob for approximately thirty seconds. Release the knob and affirm that the pilot flame is still present. *If the pilot flame extinguishes, repeat steps 1 and 2 again, this time depress knob for one minute. If pilot flame still extinguishes upon releasing the knob, assure that the thermocouple connection is tight. Repeat steps 1 and 2 again. If the pilot flame still extinguishes upon releasing the knob, call your service technician/dealer.*
3. Upon lighting the pilot, continue to turn the knob counterclockwise toward the "FULL ON" position until desired flame height is reached.

## REMOTE OPERATION OF VALVE

1. Once desired flame height is set, the burner can be turned off or on using the remote control system (See Remote Control box for "Remote Installation Instructions"). It is recommended that the remote receiver be located outside the fireplace. The remote control system uses a solenoid valve to turn the gas flow to the burner off or on. The burner may also be operated manually using the knob. Turn the Knob counterclockwise to increase flame height and clockwise to decrease/shut off-the flame.  
**See Figure 2**



## SHUT-OFF PROCEDURE

1. Turn Knob (**Figure 2**) clockwise until reaching stop. Press down slightly and continue turning clockwise from "PILOT" position to the "OFF" position.  
**\*Very high-pressure gas surges may result in internal damage or leaks. If you suspect your control has been exposed to more than 1 1/2 times its maximum, have the unit checked by an expert.**

## LIMITED WARRANTY

### Refractory Logs

Hargrove gas logs carry a limited lifetime warranty against any manufactured defect or breakage when installed indoors. A replacement will be available from the dealer at which the appliance was purchased. This warranty does not cover breakage caused by excessive handling once installed and fired. Outdoor applications carry a one (1) year limited warranty.

### Burner & Grate

If the burner or grate fails due to deterioration within two (2) years of the verified purchase date, a free replacement will be made available from the dealer at which the appliance was purchased.

### Valves, Remote Controls, & Switching Devices

Hargrove warrants all valves, remote controls and switching devices against manufacturing defects, which appear within two (2) years of the verified purchase date. Warranty does not cover products that have been damaged by misuse from overheating. Before any product is returned a Return Goods Authorization number (RGA) must be issued by Hargrove's Customer Service Department. All returns must be accompanied by an explanation of the problem and all necessary parts.

### All Other Parts

If any assembled part should fail to operate or be found defective which appear within two (2) years of the verified purchase date, a replacement will be available from the dealer at which the appliance was purchased.

Buyer shall notify Hargrove Mfg Corp. of any defect covered by this warranty no later than thirty (30) days after defect is discovered. Failure to provide notice within thirty (30) days shall void the limited warranty.

## WHAT IS NOT COVERED

1. Removal and reinstallation costs.
2. Labor costs for replacement or repairs.
3. Transportation or shipping cost.
4. The cost of a service call to diagnose trouble.
5. Painted Surfaces.
6. Damage or defect caused by improper installation, accident, misuse, abuse, alteration, or authorized service technician.
7. Replacement of burner or combustion chamber resulting from improper storage of the appliance.

## LIMITATIONS AND EXCLUSIONS

1. No one has authority to add to or vary this limited warranty, or to create for Hargrove Manufacturing Corporation any other obligation or liability in connection with this appliance.
2. Any implied warranty applicable to this appliance is limited in duration to the same period of time as this written Warranty. Some states do not allow limitations on how long an implied warranty lasts, so the above limitations may not apply to you.
3. HARGROVE MANUFACTURING CORPORATION WILL NOT BE LIABLE FOR INCIDENTAL, CONSEQUENTIAL, SPECIAL OR CONTINGENT DAMAGES YOU MIGHT SUFFER AS A RESULT OF A CLAIM UNDER THIS WRITTEN WARRANTY OR ANY IMPLIED WARRANTY. Some states do not allow the exclusion or limitation of incidental or consequential damages, so the above limitations or exclusion may not apply to you.
4. This warranty applies only to the original purchaser and may not be transferred or assigned.
5. If you cannot verify the purchase date of the appliance, the warranty period will begin on the date of which the appliance was manufactured.
6. Replacement or repair parts are warranted for the remaining period of the original part warranty. Warranty parts must be obtained through authorized dealers of this product who will provide original factory replacement parts. Failure to use original factory replacement parts voids this warranty.
7. The maximum liability of Hargrove Mfg Corp. in connection with this limited warranty shall not in any case exceed the contract price paid for the product claimed to be defective or unsuitable.
8. Purchaser or user agrees to hold Hargrove Mfg Corp. harmless from any and all claims by the buyer as a result of injury or damage to an ultimate user or other person caused by the product sold herein by the seller to the buyer, whether the injury or damage results from the assembly, installation, operation, shipment, storage, or manufacture of this product. Hargrove Mfg Corp. makes no warranties, expressed or implied, other than those expressly stated herein.

## YOUR DUTIES

This appliance must be installed by a qualified installer, operated and maintained in accordance with all applicable codes and the instructions furnished with the appliance. You must provide a receipt verifying the purchase date of the appliance when making a warranty claim with the dealer from which the appliance was purchased.

This warranty gives you specific legal rights, and you may also have other rights, which vary from state to state.

**To register your Hargrove product, please visit our website at <http://www.hargrovegaslogs.com/reg.htm>.**

**CONTACT INFO: Hargrove Manufacturing Corp.**

**Tele: (800) 725-4166**